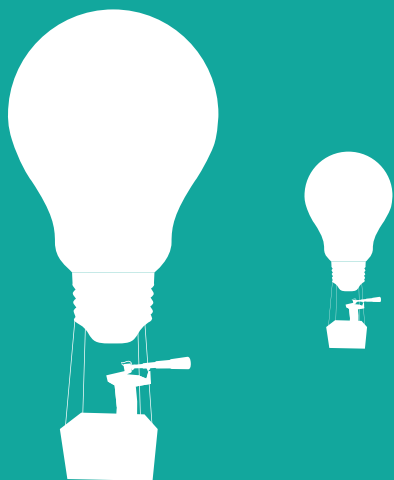


# ENERGY VISION



# REDUCE COSTS THROUGH VISIBILITY

**ENERGY VISION HELPS YOU MANAGE YOUR ENERGY COSTS, BEFORE  
THEY ARE INCURRED**

## **The challenge**

The energy market is shifting. Businesses are facing increasing pressure to find new ways to curb rising costs. Flexibility through the intelligent operation of large consumption assets such as heating and ventilation as well as on-site generation (where installed) can offer businesses a major advantage in challenging market conditions.

Flexible, large energy consumers can employ different strategies to manage energy costs in peak periods from turning off or shifting non-essential loads during expensive DUoS red zones or peak periods, to turning on any embedded generation to reduce imported power or exporting it to create new revenue streams.

Load management is by far the most effective way to avoid excessive costs, but implementing such strategies can be a struggle for time-poor energy managers. Understanding and interpreting market prices and identifying the best times to switch import to export can require significant time and resource.

## **A flexible solution**

Energy Vision produces a baseline forecast of your consumption against your tariff structures and forecast energy costs.

It then uses this information to recommend ways in which you can adjust your operations before costs are incurred. For example, it identifies periods in which you can shed load and shift consumption, and you can also simulate the financial impact of various scenarios. As well as reducing your energy costs, this proactive approach to energy management can also help you to mitigate against excessive network costs.

Using our innovative Power Hub technology, Energy Vision helps businesses to optimise both import and export to unlock additional value from any portfolio, regardless of technology. Adjusting run schedules to avoid periods of high distribution and transmission costs can also achieve significant savings.

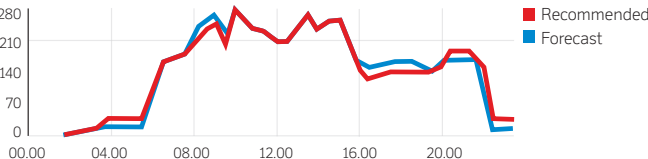
The intelligent software allows you to review and adjust actual, forecast and recommended run schedules to assess impacts and better understand energy costs.

# YOUR BENEFITS:

- **Improved visibility:** Historical consumption data is combined with tariff structures to present a forecasted view of energy costs.
- **Recommendations:** Energy Vision recommends when to shift load and turn off non-essential loads.
- **Scenario planning:** Energy Vision simulates the cost and load impact of changing your daily consumption profile by improving flexibility, giving you the ability to proactively manage energy costs before they are incurred.
- **Act on short-term opportunities:** Energy Vision's forward-looking insight enables you to capture short-term market opportunities.

## YOUR ENERGY VISION DASHBOARD

### FORECAST AND RECOMMENDED CONSUMPTION PROFILE



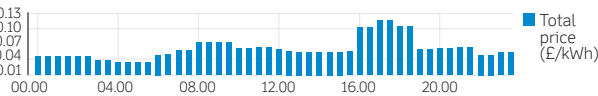
View your current and recommended consumption profiles, prices and estimated savings. Electricity export forecasts are also displayed if you have any on-site generation.

#### SUMMARY

Total consumption 6433 kWh  
Forecasted price £442.49  
Revised forecasted price £397.98

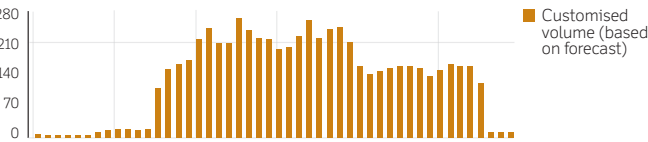
**Estimated Savings 10%**

### FORECASTED ENERGY PRICES (BASED ON YOUR TARIFF)



View your forecasted energy prices, based on your existing tariff. These are used to calculate your recommended consumption profile.

### TAILOR YOUR CONSUMPTION PROFILE



Tailor your consumption profile, dragging the bars up and down to view the effects on your forecasted price and resulting savings.

#### SUMMARY

Total consumption 6433 kWh  
Forecasted price £442.49  
Revised forecasted price £397.98

**Estimated Savings 10%**

## ENERGY VISION

1



**Understand your current energy consumption**

2



**Customise parameters to your needs**

3



**View recommendations and model scenarios to see financial impacts**

4



**Implement recommendations**

5



**Measure the results**

### **How do I know if Energy Vision is right for me?**

If you have the ability to shift or shed load or use on-site generation, you could benefit from greater flexibility. Energy Vision overcomes time and resource barriers to produce a real action plan, helping businesses to take advantage of flexibility and reduce energy costs.

### **Does Energy Vision require the installation of new equipment?**

No. Energy Vision is a cloud-based solution with no additional equipment needed.

### **About DONG Energy**

DONG Energy is one of the leading energy groups in Northern Europe, with headquarters in Denmark. The company generates, trades and supplies almost 1 million customers, delivering 46TWh of energy across Europe.

We are one of the energy companies leading the transformation to renewable energy. In the UK we are the market leader in offshore wind, with five operational wind farms, two under construction and a further three in development.

To find out more about Energy Vision, please speak to your Account Manager or contact [energyservices@dongenergy.co.uk](mailto:energyservices@dongenergy.co.uk)  
🐦 @DONGBusiness